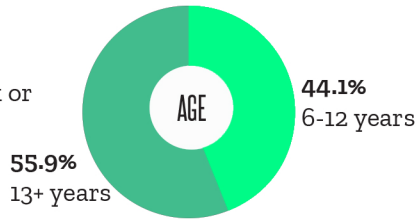
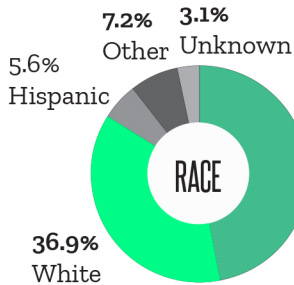




About our Littles...

The following statistics are drawn from all counties in our service area: Kalamazoo, Allegan, Calhoun, and Van Buren.



One year into their match Littles report...



87%

...improved emotional regulation



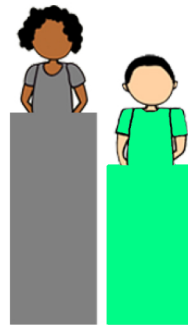
87%

...avoiding risky behaviors



85%

...improved school performance



54.9% Female
43.1% Male
1.5% Non-Binary
.5% Unknown

IN 2022...

195

local children enjoyed the caring, dedicated friendship of a Big to empower their potential.

"I never thought this is what it would be... She's more than a Big Sister. She's a role model. I don't think I can imagine my life without Clare."

-Jaliyah, about her Big Sister Clare

1929

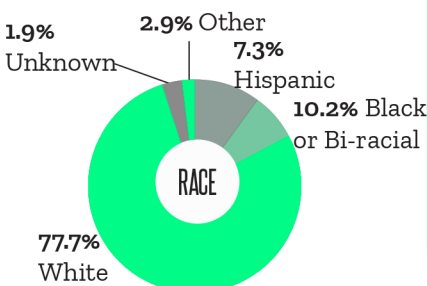
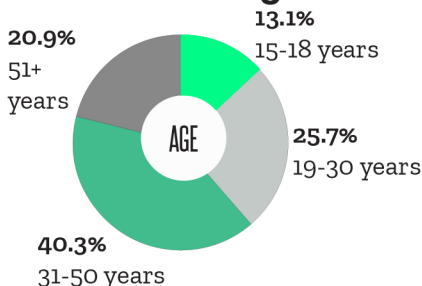
match support contacts were made by our staff in 2022.

Defending potential and ensuring child safety are part of all we do. Our staff reached out and connected with Bigs, Littles and their families 1,929 times in 2022! These check-ins helped Littles stay connected to their Bigs, ensured child safety, and supported the development of strong mentoring friendships.

"I enjoy being his friend because he's nice to be around... I don't know how long I'll know him for, but I know I'll remember him."

-Levi, about his Big Brother Eric

About our Bigs...



About our Matches...

66%

Community
Meets 2-3x per month in the community

15%

Site-Based
Meets 2-4x per month, typically at the Little's school

10%

Hybrid
Meets in person and virtually

9%

Virtual
Meets virtually exclusively